

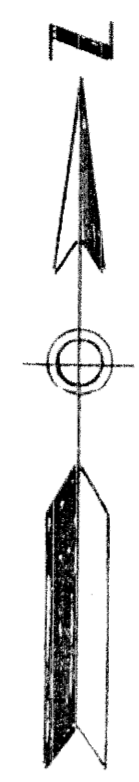
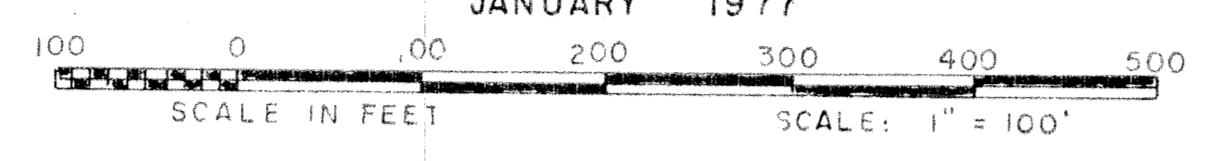
861/198

# LEXINGTON I OF SHERBROOKE

P.U.D.

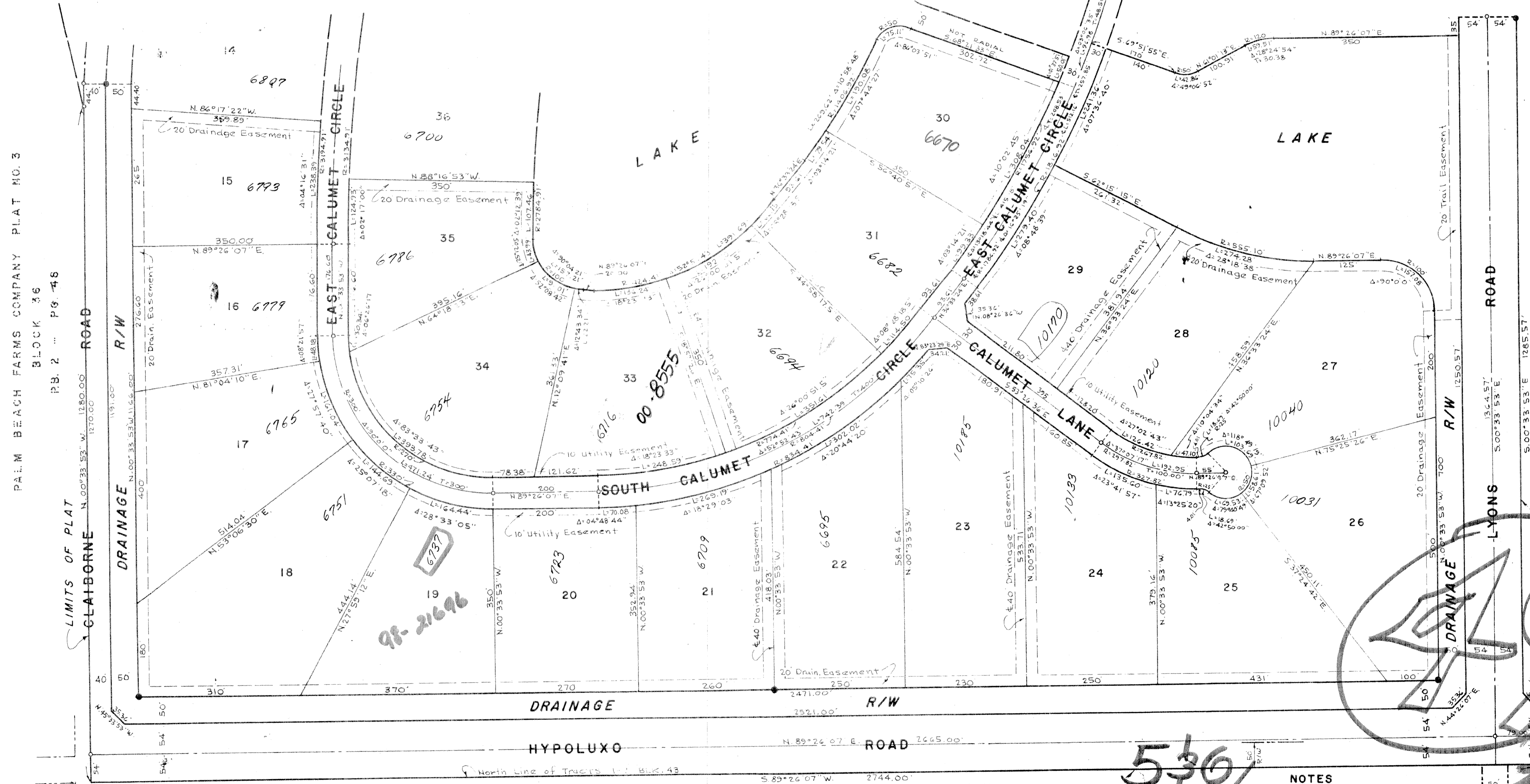
IN PART OF TRACT 42, TWP. 44 1/2 S., RGE. 42 E. & SEC'S 5 & 6, TWP. 45 S., RGE. 42 E.  
PALM BEACH COUNTY, FLORIDA  
IN 4 SHEETS SHEET NO. 4

GEE & JENSON  
ENGINEERS-ARCHITECTS-PLANNERS, INC.  
WEST PALM BEACH, FLORIDA  
JANUARY 1977



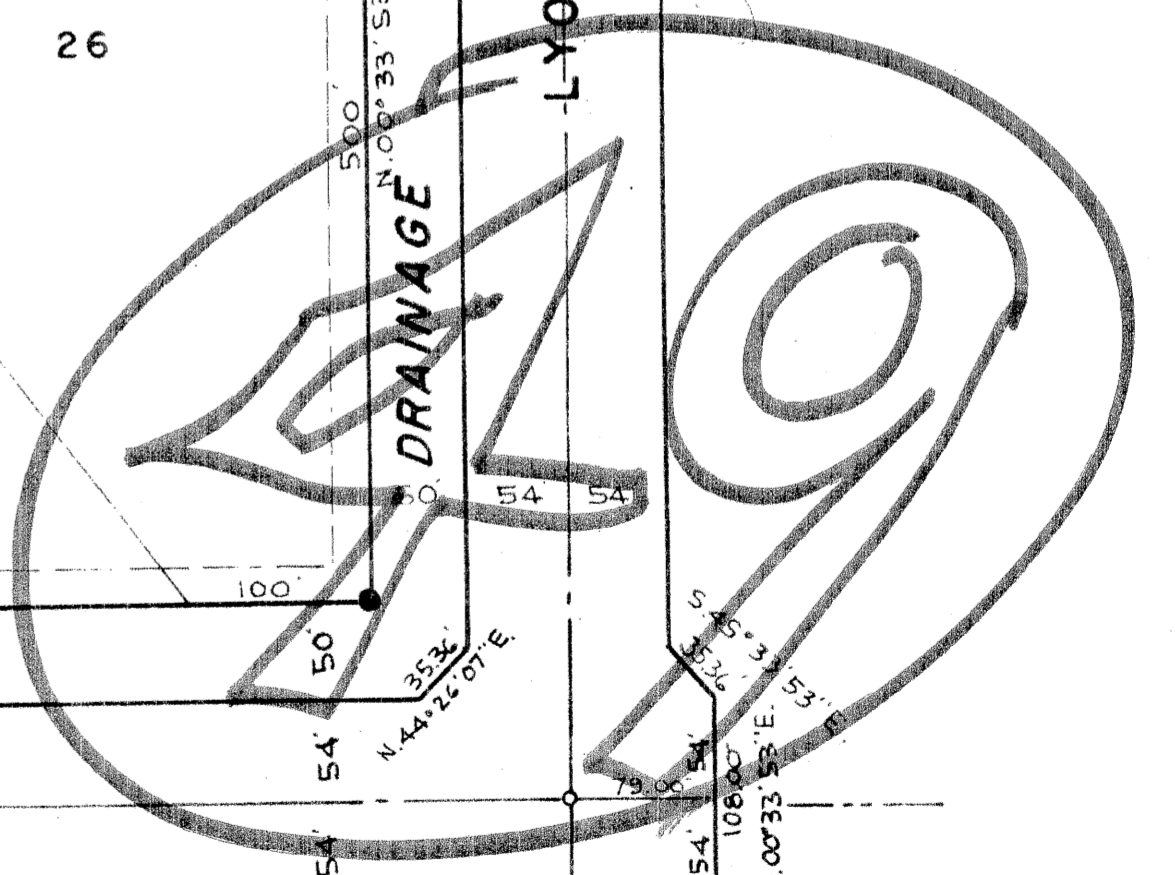
198

SHEET NO. 3



PALM BEACH FARMS COMPANY PLAT NO. 3  
BLOCK 36  
P.B. 2 ... PG. 46

PALM BEACH FARMS COMPANY PLAT NO. 3  
BLOCK 37  
P.B. 2 ... PG. 48



530

### NOTES

- All bearings shown herein are relative to an assumed meridian with the South Line of Sec. 31-44-42 bearing S.87°57'15" E.
- Building Setback Lines shall be as required by Palm Beach County Zoning Regulations.
- There shall be no buildings or any kind of construction or trees or shrubs placed on Utility Easements and/or Drainage Easements.
- denotes Permanent Reference Monument.
- denotes Permanent Control Point.

0309-002

PALM BEACH FARMS COMPANY PLAT NO. 3  
BLOCK 43  
**LEXINGTON OF SHERBROOKE**